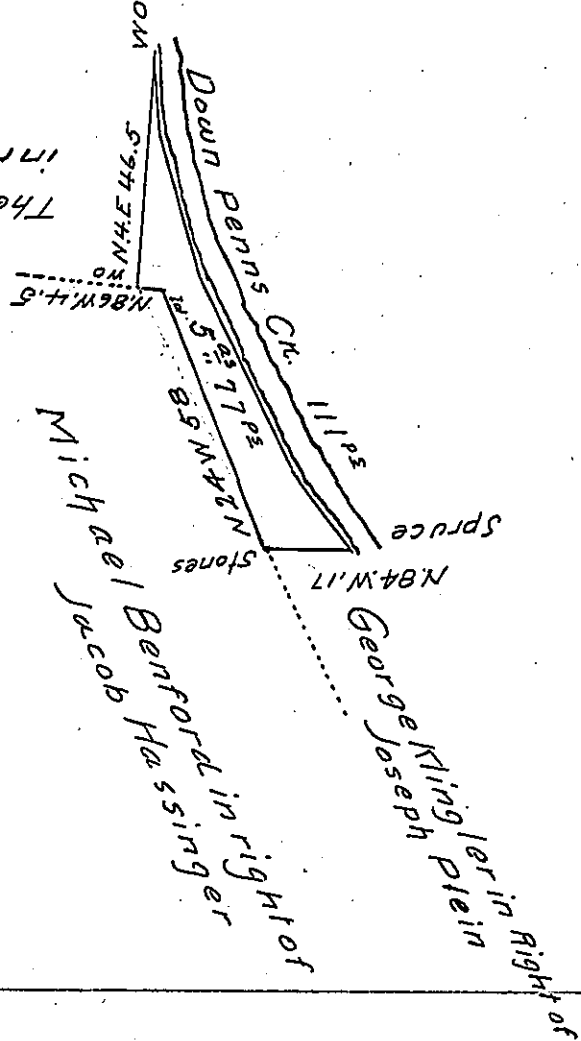


The heirs of Jacob Mourer
in right of Owen Evans



Courses & Distances
Down Penns Creek
From W.O South 11
S. 18 E. 33
S 25 E 46
S 35 E 21
111. ps

Situate in Union township Union County, surveyed the 29th day of April A. Dom. 1829, containing five acres & seventy seven perches with the Usual allowance of six per Cent &c. for George Klingler in pursuance of his Warrant bearing date the 22^d day of April A. Dom. 1829

Jno Hays D.S.

To Gabriel Hiester Esqr
Surveyor General, Penna

IN TESTIMONY that the above is a copy of the original remaining on file in the Department of Internal Affairs of Pennsylvania, made conformably to an Act of Assembly approved the 16th day of February, 1833, I have hereunto set my Hand and caused the Seal of said Department to be affixed at Harrisburg, this fourth day of August 1905

George D. Brown
Secretary of Internal Affairs.